

Ambu[®] aFlow

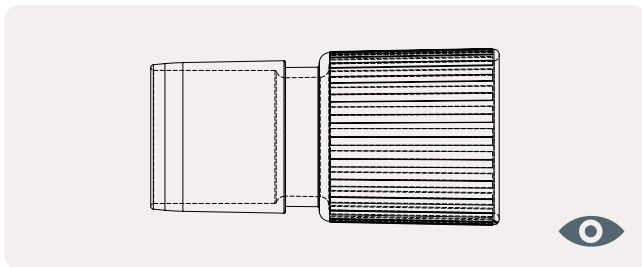
Connector accessories



Ambu aFlow's airway connectors will ease the positioning of adult and pediatric patients while ensuring and keeping the safety high. The connectors are available in EVA, PP and SBC material and in different configurations. The Ambu aFlow family of accessories, offers connectors with and without ports, water traps and various connector types that can be customized to fit any need.

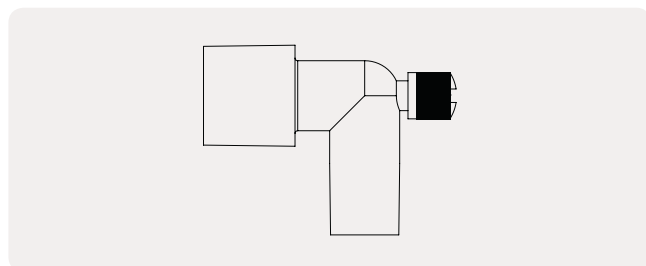
Key Benefits

- Y-piece connectors
- T-piece connector
- Nebulizer connector
- Elbow connector
- Some with dual ports
- Soft caps and luer caps
- Connection specifications includes, but is not limited to 22M-22F, 22M-22M, 15M-15F



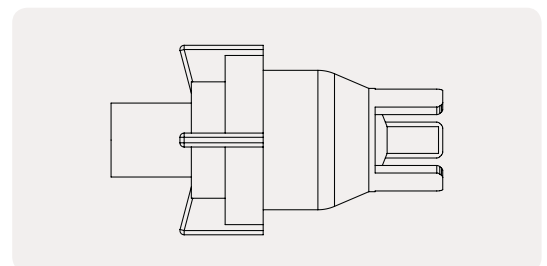
Straight Connectors

Ambu item no.	350600100	350600200	350601000	350601100
Quantity / Box	100	100	100	100
Material	EVA	PP	PP	EVA
Connection specifications	22 M - 22 F	22 M - 22 M / 15 F	22 M - 22 F	15 M - 15 F



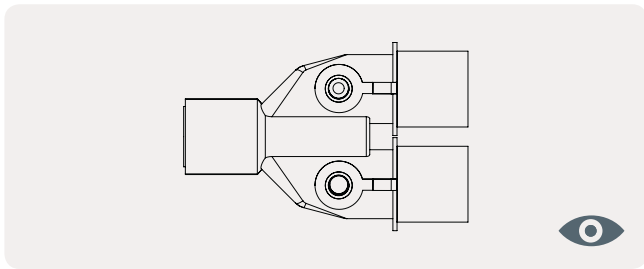
Elbow Connectors

Ambu item no.	350601200
Quantity / Box	100
Material	PP
Elbow Type	With luer cap
Circuit connection	15 M
Patient end connection	15 F



Nebulizer Connector

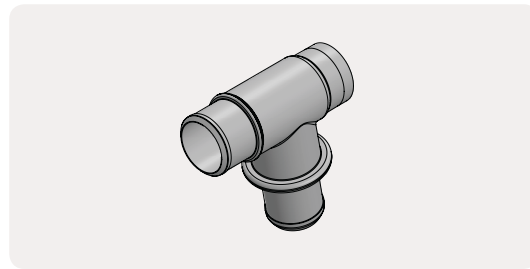
Ambu item no.	350600400
Size	2.7 micron
Quantity / Box	50
Material	SBC
Connection circuit end	18 M



Y-connector

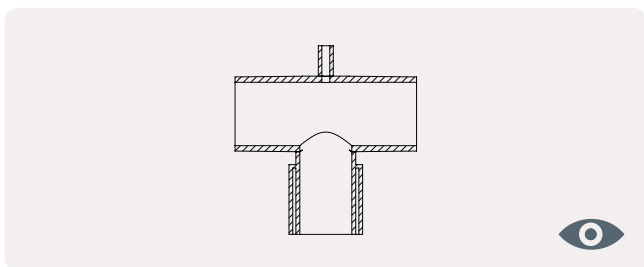


Ambu item no.	350600300	350600800
Size	Adult	Adult
Quantity / Box	90	90
Material	PP	PP
Dual ports	✓	-
Circuit end	22 M (both)	22 M (both)
Patient connection	15 F	15 F



Catheter mount body piece

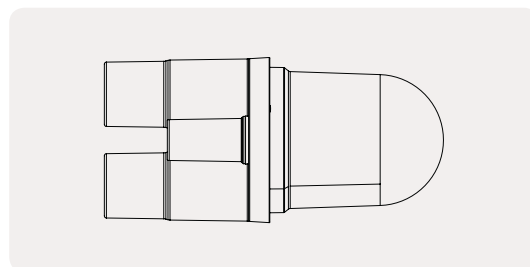
Ambu item no.	350601300
Quantity / Box	100
Material	PE
Type	Closed swivel (t-piece)
Connection specifications	22 M - 15 M - 15 F
Compressible Volume ml	3 ml



T-piece Connector

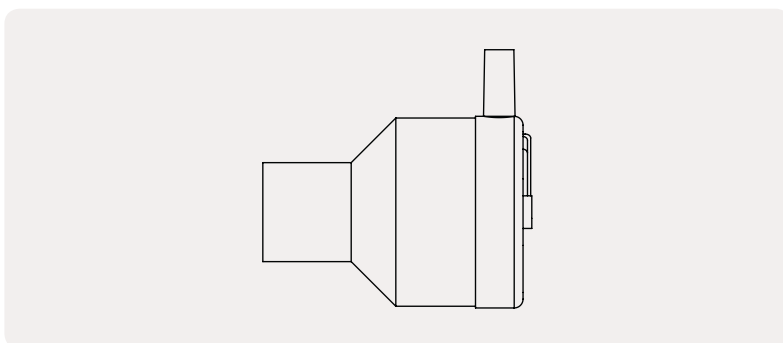


Ambu item no.	350600600	350600900	350600500
Quantity / Box	50	90	50
Material	SBC	SBC	SBC
Ports	-	-	✓
Spring valved	✓	-	-
Connection mechanism	22 M - 22 F - 18 M	22 M - 22 F - 18 M	22 M - 22 M - 22 M / 15 F



Water Trap

Ambu item no.	350600700
Quantity / Box	50
Material	PP / SBC / PE
Connection mechanism	22 M - 22 M



Tracheostomy HME filter

Ambu Item No	350701600
Quantity / Box	50
Filter Type	Tracheostomy HME
Housing Type	PP Semi Transparent
HME Material	Paper
CO ₂ Port Type	-
Compressible Volume ml	16
Tidal Volume ml	Patients bodyweight more than 15 kg
Resistance to Flow @30 L/min cm H ₂ O	0.7
Resistance to Flow @60 L/min cm H ₂ O	1.8
Resistance to Flow @90 L/min cm H ₂ O	3
Moisture Output @500 ml mg H ₂ O	28.5
Weight gr	8.5

Distributed by:
Ambu A/S
 Baltorpbakken 13
 DK - 2750 Ballerup
 Denmark
 Tel. +45 7225 2000
 Fax +45 7225 2053
 www.ambu.com

Manufactured by:
Altera Tibbi Malz.
San. ve Tic. A.S.
 İbni Melek OSB Mh. Tosbi Yol
 4 Sok. No:29 35900 Tire Izmir
 TURKEY
 Tel: (+90 232) 513 51 10 (Pbx)
 www.altera.com.tr