



# Ambu<sup>®</sup> **Blue Sensor NEO X** **Neonatal ECG electrodes**

Simply Extraordinary



## Extraordinary Performance

The new neonatal ECG electrodes from Ambu have been especially designed for premature babies. They guarantee excellent adhesion and a reliable trace even when used in incubators with high humidity.

The combination of the unique gel and the butterfly shape, that gently adheres to the contours of a baby, means that the NEO X can stay on for longer periods of time.

# Extraordinarily Gentle

Blue Sensor NEO X is very easy to place even if inside the incubator, due to the unique “no touch” application system.

The strong yet gentle adhesion reduces the risk of false alarms, whilst at the same time offering the babies optimal skin comfort and relief from stress due to unnecessary handling.

The transparent butterfly shape adheres softly and firmly to the skin, adapts to body contours and allows easy skin inspection.





# Benefits for nurses and babies

Butterfly shape means the electrode can adapt to the contours of a baby, contributing to the excellent adhesion

- Transparent material allows for easy inspection of babies' skin
- Small size means the electrode can be used on even the tiniest patient
- Special gel for long-term adhesion
- "No touch" application tabs allow for easy placement
- Radiotranslucent means electrodes do not have to be removed for X-rays
- Colour coded leadwires for easy identification
- Htalate-free and PVC-free to ensure complete biocompatibility

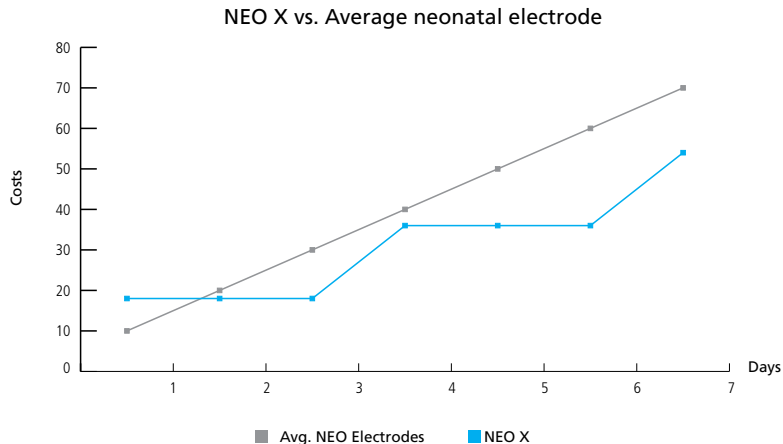


# Extraordinary savings using NEO X

With Blue Sensor NEO X your department can optimise resources and reduce costs.

The graph shows that using NEO X becomes effective from day 2, offering a potential savings of 70% during one month monitoring.\*

\* Compared to traditional standard ECG disposable electrodes, assuming that on average they stay on for 24 hours. NEO X is assumed to stay on for an average of 72 hours, based on laboratory testing and user evaluations.



Very translucent



Ambu®  
Single patient use

**Blue Sensor NEOX**  
ECG Electrodes

REF: **NEOX-60-K/EU/3**  
2012-04

LOT

1234567



Made in Malaysia  
FLC6 V01.01

LOGY



# Ordering information

## AVAILABLE CONFIGURATIONS FOR NEO X

NEO X-60-K/EU\*

NEO X-60-K/US\*\*

NEO X-60-K/C3\*\*\*

\*EU : coloured leadwires: red, yellow, black.

\*\*US : coloured leadwires: green, black, white.

\*\*\*C3 : coloured leadwires: red, yellow, green.

## STANDARD PACKAGING

Quantity / pouch.....3

Quantity / box (minimum sales).....120

Quantity per inner / outer box.....120/960

NEO X - 60 - K



PRODUCT



WIRE LENGTH (cm)

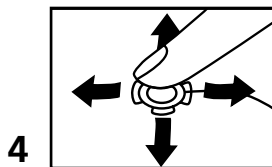
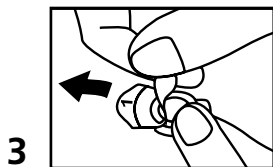
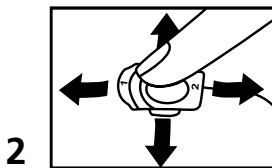
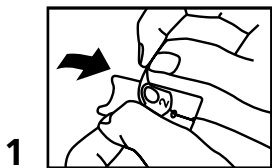


CONNECTOR



Ambu Blue Sensor NEO X

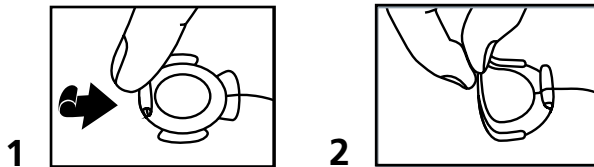
# INSTRUCTIONS FOR USE



## POSITIONING THE ELECTRODE

To place the electrodes

1. Remove the electrode from the backing liner, gently pulling it towards you, using the white tab "1".
2. Place the electrode on the patient's skin. Gently apply pressure with your finger on each of the four leaves around the electrode's edge.
3. Remove the tab labelled "2" by pulling it upwards, parallel to the skin. At the same time, hold the electrode in place with your other hand.
4. Gently apply pressure with your finger on each of the four leaves around the electrode's edge, to maximize adhesion.



## REMOVING THE ELECTRODE

To remove the electrodes:

1. Gently roll the edges of the electrode with your fingers towards the centre.
2. Lift up the electrode with your finger between the adhesive and the patient's skin.

The NEO X electrodes are not repositionable.



# Ambu

Ideas that work for life



## Ambu business areas

- Airway Management
- Patient Monitoring & Diagnostics
- Emergency Care



## Ambu A/S

Baltorpbakken 13,  
Ballerup Denmark  
DK-2750

Tel: +45 72 25 20 00

Fax: +45 72 25 20 53

[www.ambu.com](http://www.ambu.com)