

Ambu® aScope™ 5 Broncho HD 5.6/2.8

DATASHEET

aScope 5 Broncho combines the high level of manoeuvrability and imaging needed in the bronchoscopy suite with the sterility and efficiency of the single-use concept. The result? Consistently high performance, sterility, and the flexibility required for a complex and demanding workflow.

Single-use like you've never seen it before

Ambu takes single-use bronchoscopy to even greater heights with our 5th generation of aScope Broncho. Building on over a decade of single-use bronchoscopy know-how, aScope 5 Broncho combines the familiar benefits of reusable scopes with the advantages of the single-use solution.

It is compatible with the full HD resolution Ambu® aBox™ 2 and Ambu® aView™ 2 Advance displaying and processing units and can easily be connected to external monitors.

aScope 5 Broncho delivers consistently high performance with excellent manoeuvrability, next-level imaging and a smart, functional design. This level of performance is complemented by the sterility and efficiency of the Ambu single-use solution to give you the quality and flexibility you need for a complex and demanding workflow in the bronchoscopy suite.

The aScope 5 Broncho is the world's first single-use bronchoscope with bioplastic in the handle. The ABS plastics used in our bronchoscope handle will now have a 70 % lower carbon footprint compared to traditional fossil-based plastic.



KEY BENEFITS

Completely eliminate the need for reprocessing and endoscope repairs

Start or expand bronchoscopy services with minimal capital investment

Easily navigate the bronchial segments with bending angles of 195°/195° (up/down)

Designed for smooth insertion and positioning of endotherapy instruments

Choose the right endotherapy instrument needed without fear of damaging an expensive scope

Visualize the bronchial tree clearly with the HD system delivering superior image quality

Seamlessly integrate Ambu displaying and processing units to the documentation systems in use

Offer your patient a sterile scope and eliminate the risk of patient-to-patient cross-contamination

*aScope 5 Broncho and display devices may not be available in all countries, please contact your local Ambu representative.

Ambu FOREVER
FORWARD

SPECIFICATIONS

Optical system

Field of View	120°
Direction of View	0° (forward viewing)
Depth of Field	3 - 100 mm
Illumination method	LED
Camera sensor module	CMOS

Insertion portion

Bending section	195° up, 195° down
Insertion cord diameter	5.6 mm (0.22")
Distal tip diameter	6.0 mm (0.24")
Maximum diameter of insertion portion	Max Ø 6.3 mm (0.25")
Minimum endotracheal tube size (inner diameter)	7.0 mm/21 Fr
Working length	600 mm (23.6")
Rotary function	120° left/right
Depth marks	Every 5 cm

Working channel

Instrument channel width	2.8 mm (0.11")
Minimum instrument channel width*	Min. Ø 2.65 mm (0.10")

Suction connector

Connecting tube inner diameter	Ø 5.5 - 9.0 mm
--------------------------------	----------------

Storage

Temperature**	10 - 25 °C (50 to 77 °F)
Relative humidity	10 - 85 %
Atmospheric pressure	50 - 106 kPa

Transportation

Temperature	-10 - 55 °C (14 to 131 °F)
Relative humidity	10 - 95 %
Atmospheric pressure	50 - 106 kPa

Operating environment

Temperature	10 - 40 °C (50 to 104 °F)
Relative humidity	30 - 85 %
Atmospheric pressure	80 - 106 kPa
Altitude	≤ 2000 m

Sterilisation

Method of sterilisation	ETO
-------------------------	-----

Sustainability

Handle material	Bio-attributed ABS plastic
-----------------	----------------------------

Other

Compatibility	High-frequency endotherapy instruments, argon plasma coagulation (APC) probes, cryobiopsy probes, Nd-YAG laser probes
---------------	---

Latex and phthalate free	Yes
--------------------------	-----

ORDERING SPECIFICATIONS

Item no.	Product name	Quantity
622001000	Ambu® aScope™ 5 Broncho HD 5.6/2.8	5

* There is no guarantee that accessories selected solely using this minimum instrument channel width will be compatible in combination.

** Storage under higher temperatures may impact shelf life.



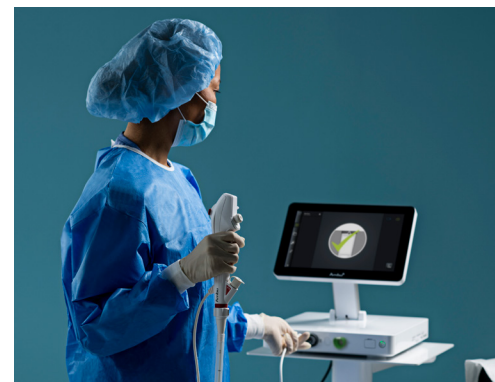
Learn more about Ambu's sustainability initiatives:
<https://www.ambu.com/endoscopy/single-use-endoscopy/environment>

Ambu FOREVER FORWARD

Ambu A/S

Baltorpbakken 13
 2750 Ballerup
 Denmark
 T +45 72 25 20 00
 ambu.com

CE 2797 US: Rx only



aScope 5 Broncho HD 5.6/2.8 works with the full HD resolution Ambu® aBox™ 2 and Ambu® aView™ 2 Advance displaying and processing units and can easily be connected to external monitors.



aScope 5 Broncho HD 5.6/2.8 is compatible with endotherapy instruments designed to fit a working channel diameter of up to 2.8 mm.